

Pharmaceutical Industry Residency Program

2026 - 2027



A Letter from the Dean 3

About Florida A&M University 4

Residency Program History 5

Program Overview 6

About Bristol Myers Squibb 7

BMS Post-Doctoral Program Steering Committee 8

First-Year Overview: Clinical Residency 10

Second-Year Overview: Pharmaceutical Industry Residency 12

Current Residents 14

Alumni Remarks 15

Residency Alumni 16

Application and Recruitment Process 18

A Letter from the Dean



Seth Y. Ablordeppey, PhD

**Interim Dean & Professor
Fulbright Scholar & Eminent
Scholar, Biomed Sciences**
Florida A&M University
College of Pharmacy and
Pharmaceutical Sciences, Institute
of Public Health

Dear Prospective Residents,

This pharmaceutical industry residency program was founded in 2009 as a partnership between Florida A&M University and Bristol Myers Squibb (BMS). The vision of the residency is to attract and develop a diverse group of talented pharmacists who bring clinical expertise, innovative ideas, and dedication to improving patient outcomes.

The program provides a two-year residency in the therapeutic area of oncology and hematology in the first year and either immunology or oncology in the second year. This residency provides its residents with a unique experience that bridges the gap between clinical practice and the pharmaceutical industry.

I am elated that Florida A&M University College of Pharmacy and Pharmaceutical Sciences, Institute of Public Health (FAMU CoPPS, IPH) has maintained a fruitful partnership with BMS, a global pharmaceutical company with residency training program that significantly enhances the skills of practitioners, while improving patients' health and attracting residents who help train PharmD learners.

The partnership with BMS aligns with the vision and mission of the College, which is to provide excellent pharmaceutical education, research, and service activities statewide, nationally, and globally in a dynamic healthcare environment.

It is my hope that learners consider this unique program in clinical and pharmaceutical industry settings.

Sincerely,

Seth Y. Ablordeppey, PhD



About Florida A&M University

The Florida A&M University College of Pharmacy and Pharmaceutical Sciences, Institute of Public Health program offers PharmD, PhD, MS, and BSPS degrees to its learners. With its main campus in Tallahassee, Florida, it is the first pharmacy program in the United States that has a fully accredited Institute of Public Health both on-site and throughout Florida managed by the College of Pharmacy. The College has additional pharmacy practice centers in Northeast Florida, South Florida, and Central Florida, which support the infrastructure for the College's statewide commitment to pharmacy education and public service.

The evolution of the College has witnessed the initiation of pharmacy education with just one learner beginning in 1951, to now being one of the largest colleges of pharmacy in the country. Currently, the College distinguishes itself as leaders in preparing those learners with the attribute of human dissimilarity, in Florida and among HBCUs. FAMU CoPPS, IPH has a rich history of producing high-caliber graduates capable of providing exceptional pharmaceutical care. Our unique program focuses on academic excellence, research superiority, and community service; this allows us to prepare learners for leading roles in the practice of pharmacy, research, and public health.

The College reinforces its primary mission through an active role and responsibility in the delivery, outcome, and study of pharmaceutical care services it shares with other healthcare providers. The College is committed to the advancement of pharmaceutical knowledge through teaching, research, and service in a supportive and caring environment that enhances the attainment of educational excellence and the highest standards in professional and ethical practice.





Nathaniel
Eraikhuemen, PharmD

**Division Director and Professor
of Pharmacy Practice**

Florida A&M University
College of Pharmacy and
Pharmaceutical Sciences,
Institute of Public Health – South
Florida Pharmacy Practice
Center

"The Florida A&M University (FAMU) and Bristol Myers Squibb (BMS) Pharmaceutical Industry Program was founded in 2009 through collaborative efforts of both institutions as an expansion of a very successful Advanced Pharmacy Practice Education (APPE) program. Karen Cohen of BMS, and the former FAMU CoPPS, IPH Associate Dean of Clinical Services, Dr. Michael Thompson, worked closely to shape the program and ensure that students from all Historical Black Colleges and Universities (HBCU) Pharmacy programs throughout the country have a competitive, yet unique experience to look forward to when applying from post-graduate pharmaceutical training programs.

The former Dean of the college, Dr. Henry Lewis, and Mr. Patrick Reilly, the former BMS Vice President of Medical Information, collaborated to ensure sponsorship of the program. Thus, paved the way for Dr. Lina (Gallego) Singleton, class of 2009, who became the first resident to complete the program. By its fourth year, the program grew to admit two residents per year.

Finally, in 2015 the program evolved to include a one-year clinical training experience analogous to the American Society of Health-System Pharmacist (ASHP) Post-Graduate Year One Residency (PGY1). I, Dr. Nathaniel Eraikhuemen as professor of Pharmacy Practice, was tasked with developing and managing the clinical portion of the training program. The second year of the program continues to focus on pharmaceutical industry training in BMS functional areas. Drs. Shanada Thomas Monestime and Marissa West were the first graduating class of the two-year program in 2017."

– Nathaniel Eraikhuemen, **Residency Program Director**



Program Overview

The FAMU-BMS Pharmaceutical Industry Residency Program provides its residents with the unique opportunity to gain clinical practice, academia, and pharma experience while completing their two-year post-doctoral training.

During the residency, residents can expect to spend the first 12 months in South Florida gaining skills and deepening their clinical acumen across a wide variety of therapeutic areas, with a focus on oncology, hematology, and immunology. The skills gained during the first year will help the resident acquire key knowledge of the therapeutic landscape and healthcare industry that they will apply in the second year of the program.

During the second year, residents will transition to New Jersey where they will apply their clinical knowledge to addressing unmet medical needs in Medical Affairs at Bristol Myers Squibb. Residents will spend 12 months working on either the Medical Strategy or Medical Communications teams to provide key deliverables.

Practice Area	Location	Length
Clinical Oncology Resident	Hollywood, FL	1 year
Medical Affairs Resident	Lawrenceville, NJ	1 year

Residency Practice Sites



FAMU College of Pharmacy
South Florida Pharmacy Practice Center
10650 State Road 84 Davie, FL 33324



Bristol Myers Squibb
3401 Princeton Pike
Lawrenceville, NJ 08648

About Bristol Myers Squibb

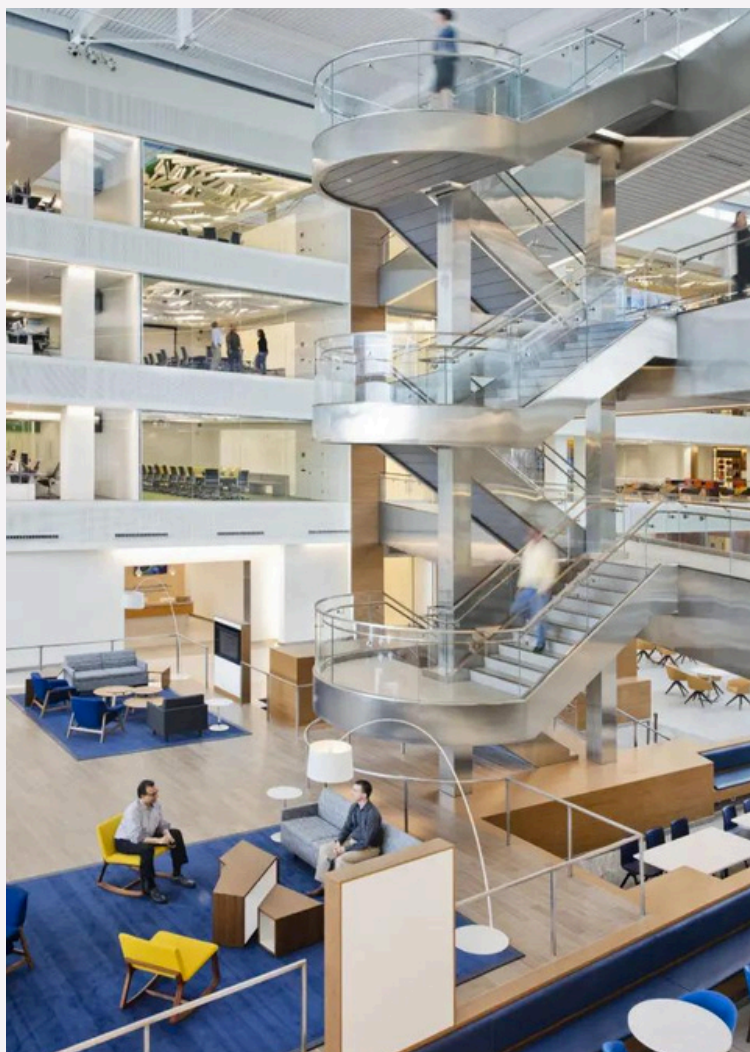
Bristol Myers Squibb is a global biopharmaceutical company firmly focused on its mission to discover, develop, and deliver innovative medicines that help patients prevail over serious diseases. We concentrate our research efforts in the following core therapeutic areas: Solid tumors, Hematology, Cardiovascular, Immunology and Neuroscience.

At Bristol Myers Squibb, our biopharmaceutical strategy uniquely combines the reach and resources of a major pharmaceutical company with the entrepreneurial spirit and agility of a successful biotechnology company.



Innovation is at the heart of everything we do. Innovation speaks the groundbreaking science in our laboratories, the state-of-the-art processes in our manufacturing plants, and our pioneering approach to product commercialization.

We are committed to the highest standards of ethics and integrity and promoting economic, social, and environmental sustainability. At Bristol Myers Squibb, we are passionate about science, passionate about innovation, and passionate about making a difference in the lives of patients.





Melissa Harris, BSc,
PharmD

**Senior Vice President, Regional
Clinical Operations**
Bristol Myers Squibb

"Bristol Myers Squibb is a company committed to patients and offers tremendous opportunities for pharmacists with an interest in joining the pharmaceutical industry. I entered Bristol Myers Squibb through the Rutgers University PharmD Fellowship program, thus I have first-hand experience with the impact that preceptors, mentors, and the pharmacist community have on our incoming fellows and residents. Now as manager and sponsor of the program, I am proud to foster an environment where members of our PharmD program are provided opportunities to gain experience and new skills that will prepare them for future opportunities to succeed in the pharmaceutical industry."

As a leader at Bristol Myers Squibb, I know the importance of investing in and engaging talent to fulfill our company's mission for patients. The Florida A&M University Pharmaceutical Industry Residency is an important part of our talent strategy and key to cultivating the Bristol Myers Squibb culture and its future."

– Melissa Harris, **Executive Sponsor of the BMS Post-Doctoral Steering Committee**





Executive Steering Committee



Melissa Harris, BSc, PharmD
Senior Vice President,
Regional Clinical Operations

Executive Sponsor



Priya Darouian, PharmD
Senior Director, Medical Customer
Experience (CX) Strategy

Steering Committee Lead



Thomas Lehman, PharmD
Executive Director, WW Medical
Rheumatology

Steering Committee Co-Lead

Steering Committee Members



Catherine Merrill, PharmD
Senior Director, Clinical Research
Collaborations Lead, Oncology



Ijeoma Oyetunde, PharmD
Senior Director, WW Medical
Oncology - PRMT5 MPL



Austin Bock, PharmD
Associate Director, WW Medical
Communications



Matthew Lupo, MCIS
Executive Director, Commercial
Regulatory Affairs



Kim Tran, PharmD
Vice President, US Field Medical
Oncology



Peter Fendt, PharmD
Director, Business Insights & Analytics



Victoria Berger, PharmD
Senior Clinical Scientist II

First-Year Overview: Clinical Residency

In the first year, residents will participate in clinical pharmacology and pharmacy practice with emphasis in hematology, oncology, and immunology at practice sites located in South Florida and Florida A&M University College of Pharmacy and Pharmaceutical Sciences, Institute of Public Health.

Residents will actively provide pharmaceutical care to patients with cancer and immunologic diseases across various practice sites. While at the College or in the hospital, they will also participate in workshops, meetings, and other engagements to promote professional growth. As a clinical resident and adjunct faculty, the resident will have the opportunity to:

- Provide pharmaceutical care and patients education within inpatient and outpatient settings
- Deliver lectures to student pharmacists, pharmacists, nurses, and medical students
- Collaborate with preceptors to educate pharmacy students
- Conduct research with the opportunity to present findings at local, and potentially national or international congresses
- Interact with healthcare providers to optimize treatment regimens

Adjunct Faculty Experience

Oncology Lecture Series:

Clinical oncology residents will have the opportunity to use the clinical knowledge of oncology and hematology they acquire over the first 12 months of the program to refine their public speaking and teaching capabilities as they lead lectures to third-year pharmacy students in oncology and hematology therapeutics. This teaching experience will include writing test questions, leading labs, and developing teaching materials.

Weekly Seminar:

Residents are an integral part of the South Florida Pharmacy Practice Center faculty team. As such, residents assist with facilitating weekly seminar classes for fourth-year pharmacy students. This includes responsibilities such as leading case discussions and lectures, proctoring exams and quizzes, and conducting workshops (CV reviews/mock interviews) in support of post-doctoral application preparation.

Research Mentorship:

While learning the key principles of conducting high-quality research by leading their own research projects, oncology clinical residents are able to share the knowledge and skills they gain by serving as research mentors to a subset of fourth-year pharmacy students completing clinical research projects. This includes providing feedback on research proposals, reviewing manuscripts and posters to ensure the quality of student pharmacist clinical research.

Clinical Residency Experience

First-year clinical oncology residents will complete their training with Memorial Regional Hospital. This multi-site program also allows for clinical experiences at Memorial Specialty, Memorial Regional Hospital West, Memorial Sickle Medical Home and Memorial Cancer Institute.

Memorial's pharmacy residents practice excellent, patient-focused pharmaceutical care, with the goals of promoting favorable patient outcomes, improving the health status of the community and achieving a high level of patient satisfaction. Residents study several clinical specialties and provide care for a wide range of patients. They also educate patients, pharmacists, nurses, physicians and other members of the healthcare team on drug-related topics.

Purpose

- Build upon Doctor of Pharmacy (PharmD) education
- Contribute to the development of clinical pharmacists responsible for medication-related care of patients with a wide range of conditions

Clinical Rotations*:

General Medicine	Oncology/Hematology
<ul style="list-style-type: none">• Hospital Administration• Neurocritical Care• Ambulatory Care• Psychiatry• Advanced Hospital• Research	<ul style="list-style-type: none">• Non-Malignant Hematology - Sickle Cell Disease• Inpatient Medical Oncology• Academia• Outpatient Medical Oncology• Medication Access• Investigational Drug Services

*Clinical rotations are subject to change

Staffing:

Residents are required to function as a clinical pharmacist in the inpatient setting **every other weekend and two of three major holidays** during the first year. Inpatient staffing responsibilities include anticoagulation and pharmacokinetic monitoring, medication reconciliation, and order verification. Residents will primarily staff in the oncology and transplant units.

Teaching and Preceptorship:

Residents will have the opportunity to precept APPE pharmacy students and develop presentation(s) for noon Lunch & Learn lectures. Residents may also have the opportunity to obtain an elective Teaching Certificate from the University of Connecticut.

Longitudinal Activities			
Formal Research Project	Medication Use Evaluation	Research Presentation*	SESHP Continuing Education Presentation
Monthly Adverse Drug Reports	Journal Club Continuing Education Presentation	Pharmacy Committee Meetings	Residency Advisory Committee Meeting

*Presented in several settings including ASHP Midyear, with possible opportunities for international conferences

Second-Year Overview: Pharmaceutical Industry

In the second year, the PharmD residents will transition to central New Jersey where they will gain a diverse set of leadership skills and unique cross-functional experiences to launch a successful career in the pharmaceutical industry. Each resident will be positioned on a team within the Medical Affairs organization where they can provide significant contributions to the development, launch, and lifecycle management of various assets within BMS portfolio.

Our residents will lead critical initiatives and collaborate with a variety of US and global BMS colleagues, key opinion leaders, healthcare professionals, and other cross-functional colleagues at BMS. As a continuum from the first-year experience, the residents will be involved in providing their clinical knowledge and better meet the needs of our customers and improve patient care.

Goals

- Understand the roles and responsibilities of a PharmD in the Medical Affairs organization
- Engage with teams across the medical matrix to collaborate with key team members and complete high-priority projects
- Become an integral part of their respective teams and take ownership of key deliverables

BMS Committees:

Residents have the opportunity to gain leadership experience by taking part in BMS Fellowship and Residency Committees such as:

- Alumni Committee
- Scholarship Committee
- Recruitment Committee
- Professional Development Committee
- Community Development Committee

Mentorship:

Residents are expected to take on an active mentorship role by mentoring rotating fourth-year pharmacy students while on APPE rotations and participating in Fellow and Resident Roundtable sessions.



WW Medical Communications, Thoracic Oncology

This pharma residency track provides the resident with a 12-month experience in the evolving area of oncology research and pharmaceutical development in thoracic cancers. The fellow that participates in this pharma track will gain a broad understanding of Medical Communications through both participatory and leadership experiences.

During the year, the resident will gain experience working on the WW and the US Medical Communications book of work across the thoracic oncology portfolio, including publication planning and development of abstracts, congress presentations, manuscripts, and scientific content materials.

Past residents of this track have gone on to lead successful careers in Medical Affairs such as Medical Science Liaison, Medical Strategy, Publications and Scientific Content as well as in Clinical Development as a Clinical Scientist.

Key Experiences:

- Lead the development and execution of comprehensive publication plans (e.g. abstracts, congress posters, oral presentations)
- Collaborate with authors and agencies to develop medical publications to inform clinical practice

Preceptor:



Amber Griffies, PharmD
Director, WW Medical Oncology, Medical Communications

US Medical Strategy, Neuroscience

This pharma residency track provides the resident with a 12-month experience working in an exciting and competitive area of research and pharmaceutical development: Neuroscience. The resident that participates in this pharma track will gain a broad understanding of Medical Affairs through both participatory and leadership experiences.

During the course of the year, the resident is expected to experience several important market events including post-launch support of neuroscience assets and congress engagement planning and execution.

Past residents of Medical Strategy have gone on to lead successful careers in Medical Affairs such as Medical Science Liaison, Field Medical Excellence, and Marketing.

Key Experiences:

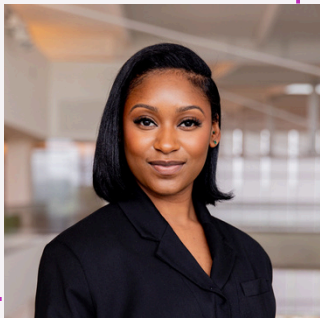
- Engage closely with field medical colleagues to develop and provide trainings and to analyze field medical insights to inform medical strategy
- Collaborate with cross-functional teams including worldwide medical, health economics and outcomes research, medical evidence generation, and Commercial stakeholders to execute the medical strategy

Preceptor:



Andrew Thorpe, PhD
Executive Director, US Medical Neuroscience

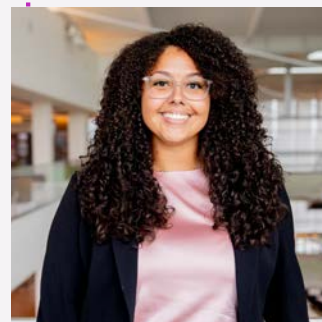
Second-Year Residents



Ashley Hicks, PharmD
US Medical Strategy, Neuroscience

Ashley is originally from Fort Lauderdale, Florida, and earned her PharmD from Florida A&M University College of Pharmacy and Pharmaceutical Sciences, Institute of Public Health. While in pharmacy school, she served as a board member of Phi Lambda Sigma, Vice President of the Gamma Zeta Chapter of the Industry Pharmacists Organization (IPhO), and participated as a global health researcher through the FSU/FAMU Global Health Research Initiative. As a clinical oncology pharmacy resident, Ashley led a research project evaluating time to treatment initiation for oral anticancer therapies in patients with locally advanced or metastatic non-small cell lung cancer. Her work will be presented at the International World Conference on Lung Cancer in September 2025.

T'yanna is originally from Egg Harbor Township, New Jersey. She received her PharmD from Howard University College of Pharmacy. During pharmacy school, she served as Vice President of Patient Care for the American Pharmacists Association (APhA), co-led research with her professor at Howard, and tutored second-year pharmacy students on Integrated Therapeutics I and II. During her clinical oncology residency, T'yanna led a research project investigating medication adherence to osimertinib in patients with EGFR-mutant non-small cell lung cancer. This research will be presented at the International World Conference on Lung Cancer in September 2025.



T'yanna Montague, PharmD
WW Medical Communications, Thoracic Oncology

First-Year Residents



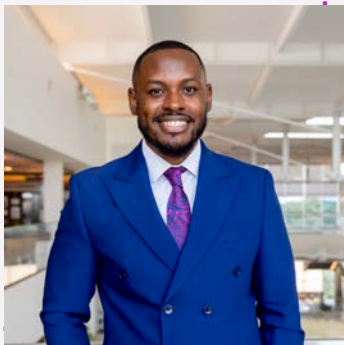
Karim Abdelhalim, PharmD
Clinical Oncology Resident

Karim is originally from Cairo, Egypt. He received his PharmD degree from Rutgers University's Ernest Mario School of Pharmacy. Throughout pharmacy school he served as Executive Board Member of the New Jersey Society of Health-System Pharmacists and Vice President of the Rho Chi Pharmacy Honor Society, and volunteered with the Promise Clinic, providing direct patient care to underserved populations alongside interdisciplinary medical teams. Through this program, Karim looks forward to making a meaningful impact on patient care and contributing to advancements in the field.

Kyra, originally from Hercules, California, earned her Doctor of Pharmacy degree from Xavier University of Louisiana. During pharmacy school, she held leadership roles in national and campus organizations focused on public health and advocacy, earning the Warren P. McKenna Service Award for her dedication to service. She contributed to research projects aimed at improving patient outcomes and is passionate about advancing healthcare. Kyra is committed to delivering compassionate, evidence-based care and looks forward to impacting patients' lives while further developing her expertise during residency.



Kyra Thompson, PharmD
Clinical Oncology Resident



Jenoy Merchant, PharmD
Medical Science Liaison,
Neuroscience
Bristol Myers Squibb

"Motivated by a profound commitment to establishing a career in medical affairs, I embarked on a journey defined by deliberate decisions to meet the ever-evolving demands of the pharmaceutical industry. Faced with the pivotal decision of residency, fellowship, or an alternative path, I recognized the FAMU-BMS program as the optimal environment to cultivate the skills and character essential to my development. As a PGY-1 resident, I refined my ability to collaborate effectively within multidisciplinary teams, enhanced my research methodology and ability to synthesize complex scientific and clinical data. A defining moment of the program was conducting clinical research, culminating in a presentation at an esteemed international congress. This momentum and solid foundation facilitated a seamless transition into my second year as a US Medical Strategy Fellow, where I engaged in purposeful projects that aligned with my professional objectives while simultaneously delivering value to the organization. The invaluable experiences and exceptional mentorship received from FAMU, BMS, Memorial Healthcare System, and the alumni network were instrumental in securing my ideal role within the medical affairs division at BMS. I am deeply grateful for the guidance and leadership that have positioned me for continued success, empowering me to make meaningful contributions to the field."

- Jenoy Merchant, **US Medical Strategy, Neuroscience Resident 2024-2025**



Maxwell Okunrobo, PharmD
Medical Science Liaison,
Hematology
Syneos Health

"My time as a FAMU-BMS postdoctoral resident was transformative both professionally and personally. As an alumnus of this unique program, I'm proud to reflect on the experiences that laid the foundation for my career in the pharmaceutical industry. In my first year, I served as a clinical pharmacist in oncology and hematology at Memorial Healthcare System, working with interdisciplinary teams to deliver patient-centered care, develop treatment protocols, and improve outcomes. These experiences strengthened my clinical skills and deepened my commitment to advancing cancer therapies. In the second year, I joined the Worldwide Medical Communications team at BMS, supporting the thoracic oncology portfolio. I contributed to publication planning, congress deliverables, and key opinion leader (KOL) engagement, directly shaping medical strategy and scientific exchange. Collaborating with cross-functional teams sharpened my understanding of drug lifecycle management and enhanced my ability to communicate complex science effectively. What set this program apart was its exceptional mentorship, leadership development, and strong professional network. The guidance from preceptors and alumni was instrumental in shaping me into the confident, capable medical professional I am today."

- Maxwell Okunrobo, **WW Medical Communications, Oncology Resident 2024-2025**

Residency Program Alumni

Jenoy Merchant, PharmD

Medical Science Liaison, Neuroscience, BMS
US Neuroscience Medical Strategy Resident, 2023–2025

Maxwell Okunrobo, PharmD

Medical Science Liaison, Hematology, Syneos Health
WW Oncology Medical Communications Resident, 2023–2025

Avery Edwards, PharmD

Associate Director, WW Medical Affairs, Rheumatology, BMS
US Immunology Medical Strategy Resident, 2022–2024

Imani Carpenter, PharmD

Associate Director, Global Oncology Publications, AstraZeneca
US & WW Oncology Medical Communications Resident, 2022–2024

Alyssa Morgan, PharmD, BCOP

Medical Science Liaison, Breast Cancer, AstraZeneca
WW Oncology Publications Resident, 2022–2023

Nabil Sukar, PharmD

Medical Science Liaison, Alzheimer's Disease, Eisai
US Immunology Medical Strategy Resident, 2021–2023

Franco Dickson, PharmD

Director, Global Oncology Publications, AstraZeneca
WW Oncology Publications – Early Transition Assets Resident, 2020–2022

Raena Rhone, PharmD

Senior Medical Science Liaison, Neuropsychiatry, BMS
US Immunology Medical Strategy Resident, 2020–2022

Aaron North, PharmD

Medical Science Liaison, Thoracic Oncology Portfolio, AstraZeneca
US Immunoscience Medical Strategy Resident, 2019–2021

Richie Onwuchekwa Uba, PharmD

Associate Director, Clinical Research Scientist, Hematology, Genmab
WW Immuno–Oncology Publications & Scientific Content Resident, 2019–2021

Donalle Johnson, PharmD

Director, US Field Medical Content Excellence & Project Management, Eisai
US Immuno–Oncology Medical Strategy Resident, 2018–2020

Imani Pelt Nosa, PharmD

Global Oncology Publications Lead, Astellas Pharma
WW Early Oncology Medical Communications Resident, 2018–2020

Bryandt Douglas, PharmD

Senior Medical Science Liaison, Cell Therapy, BMS
WW Medical Oncology Publications Resident, 2017–2019

Victoria Spence, PharmD

Senior Medical Science Liaison, Thoracic Oncology, AstraZeneca
US Oncology Medical Strategy Resident, 2017–2019

Jessie Nia Ross, PharmD, CMPP

US Medical Lead, Next Gen Immunology Franchise, Sanofi
WW Medical Oncology Publications Resident, 2017–2018

Kevin Clarke, PharmD

Director, Global Medical Affairs Strategy, Vertex Pharmaceuticals
WW Medical Oncology Publications Resident, 2016–2018

Marissa West, PharmD

Director, US Medical Oncology, Gilead Sciences
WW Medical Oncology Publications Resident, 2015–2017

Shanada Monestime, PharmD, BCOP

Director, Community Engaged Research, GO2 for Lung Cancer
WW Oncology Medical Information Resident, 2015–2017

Jade Hoang, PharmD, MBA

Director of Marketing, US HCP Marketing, BMS
R&D Strategy and Analytics Resident, 2014–2015

Temeitope Osiyemi, PharmD

Medical Science Director, Genentech
Medical Information Resident, 2014–2015

Ijeoma Oyetunde, PharmD

Senior Director, WW Medical Oncology – PRMT5 MPL, BMS
Medical Information Resident, 2013–2014

Karina Utkina, PharmD

Medical Director, Hematology/Oncology, Pharmacosmos Therapeutics Inc.
R&D Strategy and Analytics Resident, 2013–2015

Dawn Bey, PharmD, MBA

Senior Director, Field HEOR, Vertex Pharmaceuticals
R&D Strategy and Analytics Resident, 2012–2013

Kiitan Babalola, PharmD, MBA

Regional Medical Scientific Director, Oncology, Merck
Medical Information Resident, 2012–2013

Christina Wright, PharmD

National Director, Immunology Field Medical, Sobi Pharmaceuticals
Medical Information Resident, 2011–2012

Lina Singleton, PharmD

Senior Scientific Director, AbbVie
Medical Information Resident, 2009–2010

Eligibility Requirements:

FAMU-BMS Residents will be expected to both practice in a diverse clinical practice environment and corporate pharma company. As such, all prospective residents will require the following:

- Doctor of Pharmacy (PharmD) degree from an accredited institution prior to the start of the residency
- Selected candidates are required to obtain **pharmacist licensure in the state of Florida prior to or within 90 days** of starting the first year of residency (A Florida pharmacy intern license will be required while pharmacist licensure is pending)
- All candidates must have authorization to work in the United States. The program does not currently sponsor candidates for H-1B status to work as pharmacy residents.

Application Materials:

Required Item	Due Date
Letter of Intent (LOI)	October 20th
Curriculum Vitae (CV)	October 20th
Unofficial transcript	October 20th
(3) Letters of Recommendation	November 14th

Letters of Intent and Letters of Recommendation should be addressed to:

Nathaniel Eraikhuemen, PharmD
Division Director and Professor
Florida A&M University College of Pharmacy and Pharmaceutical Sciences, Institute of Public Health
10650 State Road 84
Suite 200
Davie, FL 33324

Application Submission:

All application materials must be submitted electronically via the FellowMatch portal [here](#).

Interviewing will be conducted on a rolling basis once the application portal opens on **September 29th**, therefore we strongly encourage candidates to submit application materials prior to the application deadline. The deadline for all application materials is **Monday, October 20, 2025**. Recommenders will have until **Friday, November 14, 2025** to submit letters of recommendation.

Recommenders must upload their letters via the link emailed by FellowMatch/IPhO. All letter of recommendation files should be named using the following format: [Candidate Name] - Letter of Recommendation 2026-2028.

(Example: Jane Doe – Letter of Recommendation 2026-2028)

Interview Process:

Candidates should prepare to complete first round, second round, and virtual final-round interviews. Select candidates will be invited to a virtual reception with Residency Program alumni and stakeholders.

Select candidates will be invited for a virtual final round interview. Final-round interviews will include an oral presentation delivered by the candidate and a clinical competency assessment.

One candidate will be selected for each available position for a total of two candidates. All applicants will be notified of their status by the end of **December 2025**.

For additional questions, please email us at famu@bms.com or visit our [website](#) for more information.

2025 Recruitment Timeline



Residency Webinar #1 ([Register here](#))



Residency Webinar #2 ([Register here](#))



Application portal opens



Interviews begin



Application submission deadline (All materials due)



Offers made to candidates

